

Titan™ 300 Reverse Osmosis System

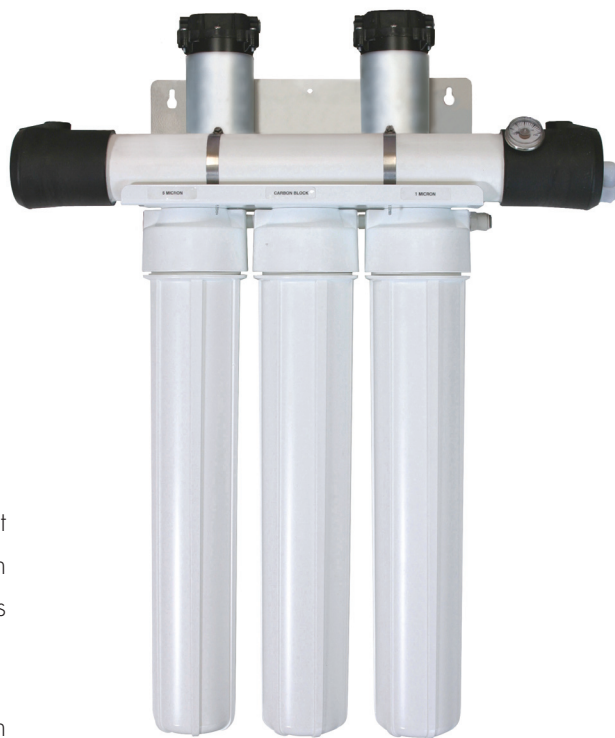


Titan™ 300 L-Series Reverse Osmosis System

- Fully Equipped and Customizable
- Higher Recovery Rates
- Lower Energy Consumption
- High Flow Extra Low-Energy Membranes
- Lower Maintenance
- Compact Space Saving Design
- Individually Wet Tested and Sanitized
- 1-Year Limited Warranty
- Made in the U.S.A.

Titan L-Series Reverse Osmosis Systems feature an excellent pre-treatment design, high quality components and offer high performance. **Titan** systems are designed for higher recovery rates and minimum energy consumption.

Experience greater savings with lower maintenance and operation costs when you install a **Titan Reverse Osmosis System**.



Titan 300
200025

The Ultra Water
Treatment Solution.

Titan™ 300 Light Commercial Reverse Osmosis System

Standard Features:

- **Membrane:** One 2.5" x 21" TFC HF4 Membrane – For maximum rejection of impurities and high flow.
- **Membrane Housing:** One 2.5" x 21" Champ™ Membrane Housing – Features a patented design and requires no tools when servicing.
- **Pump:** Two Aquatec® 8800 Booster Pumps 24 VAC – Designed for continuous use and features built in protection for loss of feed water pressure, UL recognized and NSF58.
- **Frame:** One Steel White Powder Coated Triple Bracket – Corrosion resistant and light weight.
- **Sediment Filter:** One 2.5" x 20" Slim Line 5 Micron Polypropylene Filter – Removes sediments and protects the system.
- **Carbon Block:** One 2.5" x 20" Slim Line 10 Micron Carbon Block – Removes Chlorine, odors and tastes.
- **Carbon:** One 2.5" x 20" Slim Line GAC – Post polishing carbon filter for taste enhancement.
- **Filter Housing:** Three 2.5" x 20" Slim Line Double O-Ring Filter Housings – Offers durability and improved sealing capabilities.
- **Pressure Gauge:** One PuroTech™ 1.5" 0-150 PSI Pressure Gauge – For accurate monitoring of the system's operating pressure.
- **Tank Switch:** Two Aquatec® Tank Pressure Switches w/ 3/8" JG Ports 20-40 PSI – For automatic operation with a pressure tank.
- **Electronic Shut-Off Valve:** One Aquatec® Electronic 24 Volt Solenoid Valve 3/8" – Automatically shuts off the feed water to the system.
- **Auto Flush Timer Valve:** One Aquatec® Auto Flush Timer Valve 800 ml/min 1/4" – Regulates the system's recovery (product to waste ratio) and automatically flushes the membrane on start-up.
- **Transformer:** Two Aquatec® 8800 2 Amp 110 Volt 60 Hertz 24 VAC Transformers.
- **Easy Maintenance & Operation:** Titan™ reverse osmosis systems feature a compact design, are pre-plumbed, pre-wired, and have all of their components strategically located for easy access and inspection.



Titan 300
pictured
Optional Floor
Standing Frame

Titan L-Series System Options & Upgrades

Part Number:	Description:
200026	HM Digital Panel Mount Dual TDS Meter DM-1 Option
200027	PuroTech 2.5" Stainless Steel Housing Upgrade Each
200028	Metal Frame, Bracket, Bulk Head Fittings Option
201359	Titan L-Series 220 Volt 50/60 Hz Booster Pump Upgrade

System Specifications

Model	Titan™ 300	Part #	200025
Gallons Per Day	300 @ 77°F	Dimensions (Approx.)	7" x 25" x 32"
Weight (Approx.)	50 lbs.	Concentrate Re-Circulate	N/A
Auto Flush	Standard	Element Size (in.)	HF4-2521
Elements (Qty.)	1	Motor HP	N/A
Voltage	110 or 220	Hertz	50 or 60
Feed Connection	3/8"	Product Connection	3/8"
Waste Connection	1/4"	Recovery	40%

System Operating Specifications

Minimum Feed Pressure	35 psi
Minimum NaCl % Rejection	96%
Minimum Feed (GPM)	1
Maximum Hardness	15 Grains / Gallon
Maximum TDS	1000 ppm
Operating Pressure	120 psi
Nominal NaCl % Rejection	98.5%
Maximum Feed (GPM)	3
pH Range	3 – 11
Maximum Temperature	105° F

DISTRIBUTED BY: